



SOLUTIONS OVERVIEW



The diagram illustrates a Telco Systems' Service Management System architecture. It features a central core with 100 MPLS and 100 Ethernet links. The core is connected to various T-Metro routers (T-Metro 224, T-Metro 1024, T-Metro 8000) and T-Metro 3312 switches. The system also includes 4G and 2G/3G cell sites, and two cloud environments for load balancing.

Telco Systems supports carriers' cloud-to-edge and cloud-to-cloud connectivity requirements with a robust, end-to-end, service-oriented Ethernet and MPLS solutions. These solutions allow carriers to overcome the unique challenges that cloud services add by offering low latency, high availability, improved traffic engineering, and multi-level, end-to-end service management. Telco Systems' carrier cloud solutions provide an end-user experience level that is equal to or better than what users would get off their local network.

EDGE and AGGREGATION



T-Metro 8006

Cloud gateway and high density aggregator



T-Metro 8001

10GE service aggregator and cloud gateway



T-Metro 7224

MPLS-PE 10GE aggregator



T-Metro 7124S

MPLS 10GE aggregator



T-Metro 200

Multiservice access platform



T-Metro 5324T

Multi-speed copper aggregator



T5C-XG

10G Ethernet aggregator



T5C Family

1G Ethernet copper/fiber aggregator

ACCESS and DEMARCATION



T-Marc 3208SH

Hardened MPLS/Ethernet mobile backhaul and CES demarcation



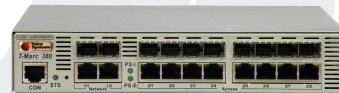
T-Metro 7124S

10GE access and demarcation device



T-Marc 3312SC

MPLS/Ethernet mobile backhaul and CES demarcation



T-Marc 340/380

Premium Ethernet service demarcation



T-Marc 280

Ethernet service demarcation



T-Marc 250/254

Hardened Ethernet demarcation and CES



ETHERNET/MPLS

ETHERNET



WHO WE ARE

Telco Systems designs and develops leading edge telecom network solutions which enable service providers to create intelligent, end-to-end, service-assured Carrier Ethernet/MPLS networks. These solutions support multiple services with high reliability, assurance and guaranteed service quality to enable service providers to differentiate their offering, and transform the user experience with optimized TCO (total cost of ownership), lowering their overall operating expenses (OPEX).

WHAT WE DO

Telco Systems provides service-aware, purpose-built, carrier-grade networking solutions by using its robust BiNOX operating system that supports a wide variety of technologies, including Ethernet, MPLS, and Circuit Emulation Services (CES). These technologies are complemented with a complete set of OAM (operations, administration and maintenance) tools, extensive Quality of Service capabilities, and time synchronization options that allow service providers to deliver a complete end-to-end, service-aware solution across both Ethernet and MPLS networks.

With a strong focus on end-to-end solutions that generate value for customers and help them realize the full potential of a connected world, Telco Systems focuses its solutions around four primary vertical markets – carrier cloud networking and services, business Ethernet services, mobile backhaul, and AdvancedTCA® (ATCA) switching blades that provide carriers with progressive applications and services. This broad offering of products extends from the edge of the network to the core and edge of the cloud, and is supported by EdgeGenie, Telco Systems' leading service management system.

ABOUT US

Established in 1972, Telco Systems has over 40 years of experience in the design and development of high-performance network communications equipment. As a wholly-owned subsidiary of BATM Advanced Communications (LSE: BVC and TASE: BATM), the company has access to over 700 engineers and scientists through BATM's integrated research and development program across its subsidiary companies. Since its founding in 1992, BATM has excelled in designing and manufacturing innovative solutions for the telecommunications industry.

Telco Systems USA

15 Berkshire Road
Mansfield, MA 02048, USA
Tel: 800-221-2849, 781-551-0300
Email: sales@telco.com

Telco Systems Int'l

13 HaYetsira St, Yokneam Illit, Israel
Tel: +972-4-909-6444/6476
Email: sales@telco.com

Telco Systems EMEA

Peterstr. 2-4
52062 Aachen, Germany
FR: +33-95-314-7731
DE: +49-241-463-5490
Email: sales.emea@telco.com

Telco Systems APAC

10 Anson Road
#17-03 International Plaza
Singapore 079903
Tel: +65-622-43112
Email: sales.apac@telco.com

Telco Systems Latin America

15 Berkshire Road
Mansfield, MA 02048, USA
Tel: 1-781-255-2106
Email: sales.latam@telco.com

Follow us on



@telcosystems

SN: SOL-OVR-JUL13

©2013 Telco Systems, a BATM company. All rights reserved.

Telco Systems, T-Marc, T-Metro, EdgeGate, EdgeLink, BiNOS, BiNOSCenter, Metrobility, Net-Beacon, are registered trademarks of Telco Systems. T5C-XG and Mini-Mux EtherCare, ResponseEdge, EtherEdge, EtherProbe, EtherReach, EtherSlam, EtherTone, RapidExchange are trademarks of Telco Systems.

The information contained in this publication is accurate as of its publication date; such information is subject to change without notice. Telco Systems is not responsible for any inadvertent errors.